

LUCAN OFFICE LED

IP20

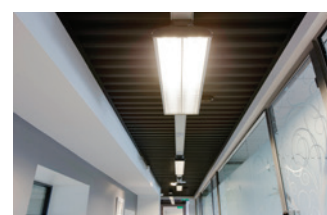
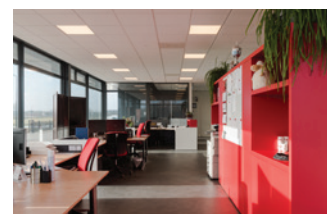
CE  05 LM-79 LM-80



Veko *Lucan* luminaires are specially designed to give office spaces, but also schools, shops or showrooms, a great industrial look. This aesthetically very nice luminaire is an asset in both new construction and renovation projects. When super-efficient *Lucan* is combined with Veko's presence detection, you will for sure enjoy very low energy bills.

But there is more. Research indicates that a good and well-distributed level of light positively effects employees and visitors. With the use of LED in combination with self-supported mirror optics and parabolic strips, the *Lucan* has a very low blinding factor. This makes it very suitable for areas where strict blindness requirements apply, for example because of the use of displays.

Lucan luminaires are optionally supplied in untreated or anodized aluminium or in a RAL colour and Veko delivers them in two versions. With the Trend Basic version, a mirror reflector is clicked on a standard Veko profile. At the Trend de Luxe version, profile and reflector are made in one piece. The use of aluminium in our light lines ensures a great temperature management: Veko LED lighting operates effortlessly at ambient temperatures to 35 °C or even higher. At Veko, a warranty of 10 years is therefore possible.



Technical information

| | |
|------------------------------|---|
| Length | 1,530 mm |
| Output flux | 1,400 - 14,650 lm |
| Wattage | 12 - 122 W |
| Voltage | 220 - 240 V |
| Frequency | 50 ÷ 60 Hz |
| Power factor | >0.95 |
| Drivers | Philips or Osram |
| Operational temperature | 0 °C to +35 °C (on request higher or lower temperatures possible) |
| Weight | approx. 5.5 pounds including profile |
| Application | Offices, retail and schools |
| Installation height | 2 - 4 m |
| Colour temperature | Natural white (± 4,000 K) On request other temperatures possible (3,000 - 6,500 K) |
| Colour Rendering Index (CRI) | >80 (>90 possible) |
| Material | Untreated aluminium |
| Colour | Untreated aluminium, anodized, RAL colours |
| Lens option | Diffuse |
| Cover material | Polycarbonate |
| Reflector cover | Parabolic strips grille |
| Impact resistance | IK02 |
| IP code | IP20 |
| Options | DALI, CLO, emergency lighting (central or decentral) |
| Warranty | L85B10 / at least 5 year warranty / Ta 35 °C |
| Expected life span | It is possible to reach 100,000 hours |
| BREEAM norms | Yes |

On the initial performance, a tolerance of ± 10% is applicable, according to IEC. Technical data subject to change.

LUCAN OFFICE LED

IP20

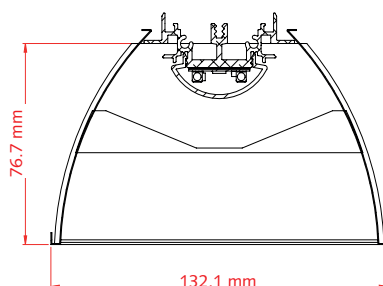
LUCAN TREND BASIC



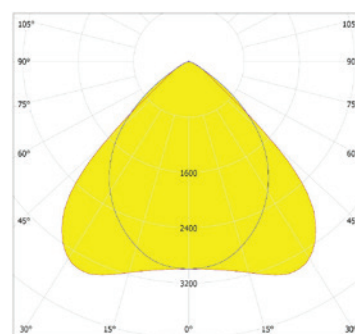
Luminaire



Dimensions



Polar diagram



| Product code IP20 | Length (mm) | Wattage (W) | Output flux (lm) | Lumen/Watt |
|-------------------|-------------|-------------|------------------|------------|
| LNT-D-151 | 1.530 | 12 - 92 | 1.400 - 9.600 | 105 - 132 |
| LNT-D-152 | 1.530 | 16 - 122 | 2.100 - 13.850 | 113 - 130 |

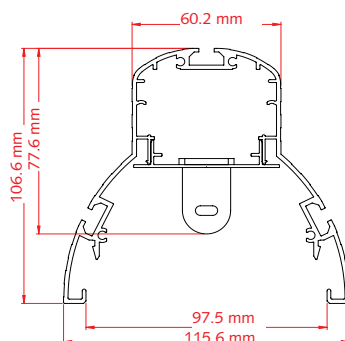
LUCAN TREND DE LUXE



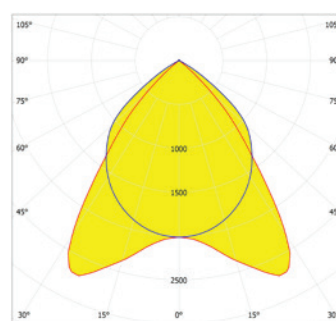
Luminaire



Dimensions



Polar diagram



| Product code IP20 | Length (mm) | Wattage (W) | Output flux (lm) | Lumen/Watt |
|-------------------|-------------|-------------|------------------|------------|
| LNL-D-151 | 1.530 | 12 - 91 | 1.500 - 10.150 | 111 - 140 |
| LNL-D-152 | 1.530 | 16 - 122 | 2.200 - 14.650 | 120 - 137 |

On the initial performance, a tolerance of $\pm 10\%$ is applicable, according to IEC. Technical data subject to change.

LUCAN OFFICE LED

IP20

RENAULT

