

Industrial luminaire for LED light sources - limited glare version.

## TECHNICAL DATA

**Mounting:** surface mounted, in the ceiling, with mounting frame (sold separately), suspended, on chains (on request), for hanging on a cable, with special mounting bracket (on request)

**Body:** high pressure die-cast aluminum

**Colour:** gray

**Diffuser:** tempered glass

## ELECTRICAL DATA

**Power supply efficiency:** 90%

**Power:** 220-240V 50/60Hz

**Includes light source:** yes

**Type of equipment:** ED

**Electrical connection:** max 3x2,5 mm<sup>2</sup> wire

## OPTICAL DATA

**Light distribution:** rotationally-symmetric

**Way of lighting:** direct

**Type of optic:** reflector

## GENERAL DATA

**Lifetime (L80B10):** 100 000 h

**Additional information:** Ball impact resistance. The possibility of using one or more power supplies in the luminaire.

**Warranty:** 5 years

**Application:** warehouses, logistics centers, industrial facilities, sport facilities, roofing, outdoor mounting without roof on special request (index extension: .985)



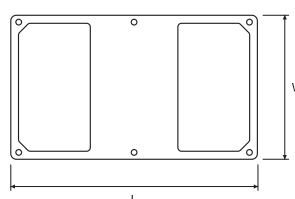
Code	Beam angle	Luminaire power [W]	Lumen luminaire [lm]	Efficacy [lm/W]	Colour temperature [K]	CRI/Ra	Operating temperature range [°C]	UGR
090342.5L04.016	70°	205	21000	102	4000	≥80	-40 ... +45	<22
090342.5L01.016	70°	205	23200	113	4000	≥70	-40 ... +45	<22
090342.5L02.016	70°	205	23200	113	5700	≥70	-40 ... +45	<22
090342.5L03.016	70°	205	22100	108	6500	≥70	-40 ... +45	<22

090342.5L04.016.985

Type of luminaires

985 Luminaires for outdoor mounting without roof on special request

Code	Dimensions [mm] L W H	Mounting dimensions [mm] L	Pallet quantity	Quantity in package	Net weight [kg]
090342.5L04.016	675 398 90	590	30	1	11.0
090342.5L01.016	675 398 90	590	30	1	11.0
090342.5L02.016	675 398 90	590	30	1	11.0
090342.5L03.016	675 398 90	590	30	1	11.0



Outdoor mounting without roof on special request (index extension: .985).

Luminous flux tolerance +/- 10%.

Power tolerance +/- 5%.

Lighting beam, light intensity distribution and light efficiency were examined in accordance with the EN ISO 17025:2005 norm for EN13032 norm series and the LM-79 norm.

Manufacturer does not provide suspension components.

Up-to-date product info and General Warranty Terms available on our website [www.luglightfactory.com](http://www.luglightfactory.com)

Detailed information on luminous fluxes and powers for individual indexes are indicated on the product data sheet.

The parameters in the data sheet are given for Ta=25°C.

## OTHER PICTURES



Luminaire suspended on a cable with a special mounting bracket - bottom view

Luminaire suspended on a cable with a special mounting bracket - top view

## ACCESSORIES



150020.00823

Adjustable mounting bracket,  
60x705x226

150020.00955

Adjustable mounting bracket for  
mounting without roof, 60x705x226

150020.00824

Bracket for surface mounting,  
89x205x187 (x2)

150020.00956

Bracket for surface mounting without  
roof, 89x205x187 (x2)

150021.00918

Frame for recessed mounting,  
513x790x109

150021.01011

Frame for recessed mounting without  
roof, 513x790x109

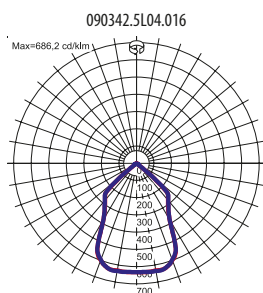
150010.00974

Suspended frame for connecting two  
CRUISER 2 PLUS LED or CRUISER 2 PLUS  
LB LED luminaires, 544x582x42

150020.00991

Mounting bracket for hanging CRUISER  
2 PLUS LED/CRUISER 2 PLUS LB LED  
luminaires on a cable, 398x675x310

## LIGHT BEAM CURVES



Outdoor mounting without roof on special request (index extension: 985).

Luminous flux tolerance +/- 10%.

Power tolerance +/- 5%.

Lighting beam, light intensity distribution and light efficiency were examined in accordance with the EN ISO 17025:2005 norm for EN13032 norm series and the LM-79 norm.

Manufacturer does not provide suspension components.

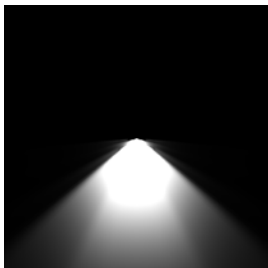
Up-to-date product info and General Warranty Terms available on our website [www.luglightfactory.com](http://www.luglightfactory.com)

Detailed information on luminous fluxes and powers for individual indexes are indicated on the product data sheet.

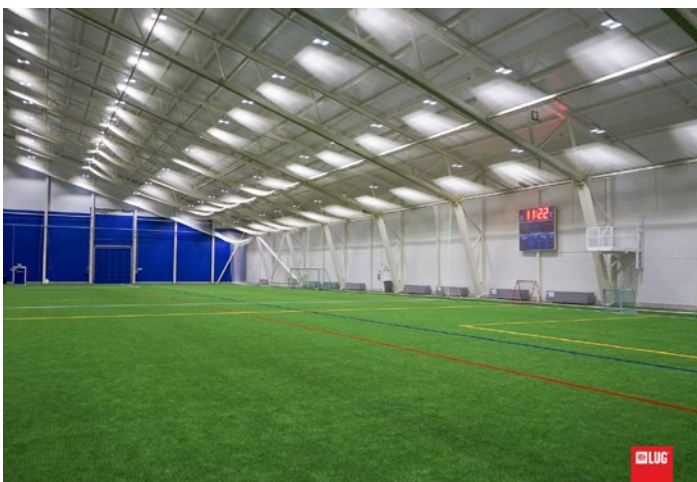
The parameters in the data sheet are given for Ta=25°C.

## WAY OF LIGHTING

090342.5L04.016



## OTHER PROJECTS



Olympic Training Center, Kuortane, Finland

Outdoor mounting without roof on special request (index extension: .985).

Luminous flux tolerance +/- 10%.

Power tolerance +/- 5%.

Lighting beam, light intensity distribution and light efficiency were examined in accordance with the EN ISO 17025:2005 norm for EN13032 norm series and the LM-79 norm.

Manufacturer does not provide suspension components.

Up-to-date product info and General Warranty Terms available on our website [www.luglightfactory.com](http://www.luglightfactory.com)

Detailed information on luminous fluxes and powers for individual indexes are indicated on the product data sheet.

The parameters in the data sheet are given for Ta=25°C.