


 220-240V  
50/60 Hz

 IK  
08

 IP  
65


Decorative facade luminaire mainly for outdoor applications, featuring high quality LED light sources.

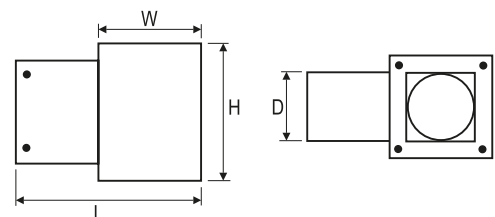
**TECHNICAL DATA****Mounting:** directly on the wall**Body:** high pressure die-cast aluminum**Colour:** gray**Diffuser:** glass**ELECTRICAL DATA****Power supply efficiency:** >71%**Power:** 220-240V 50/60Hz**Includes light source:** yes**Type of equipment:** ED**Electrical connection:** max 3x2,5 mm<sup>2</sup> wire**OPTICAL DATA****Light distribution:** circular**Way of lighting:** direct-indirect**GENERAL DATA****Lifetime (L80B10):** 50 000 h**Operating temperature range:** -30° C ... +40° C**Warranty:** 5 years**Application:** facades, hotels, shopping centers, restaurants, museums

Code	Luminaire power [W]	Lumen luminaire [lm]	Efficacy [lm/W]	Colour temperature [K]	CRI/Ra
140132.5L011.60X	14	870	62	3000	≥80
140132.5L012.60X	14	1220	87	6000	>60
140132.5L013.60X	14	400	29	red	-
140132.5L014.60X	14	780	56	green	-
140132.5L015.60X	14	340	24	blue	-
140132.5L016.60X	14	560	40	amber	-

140132.5L011.60

Beam angle
4 45°
7 10°
8 22°

Code	Dimensions [mm] L W H D	Mounting dimensions [mm] H D	Pallet quantity	Quantity in package	Net weight [kg]
140132.5L011.60X	270 150 200 100	80 60	112	1	3.8
140132.5L012.60X	270 150 200 100	80 60	112	1	3.8
140132.5L013.60X	270 150 200 100	80 60	112	1	3.8
140132.5L014.60X	270 150 200 100	80 60	112	1	3.8
140132.5L015.60X	270 150 200 100	80 60	112	1	3.8
140132.5L016.60X	270 150 200 100	80 60	112	1	3.8

**LIGHT BEAM CURVES**

140132.5L011.604

140132.5L011.607

140132.5L011.608

Luminous flux tolerance +/- 10%.

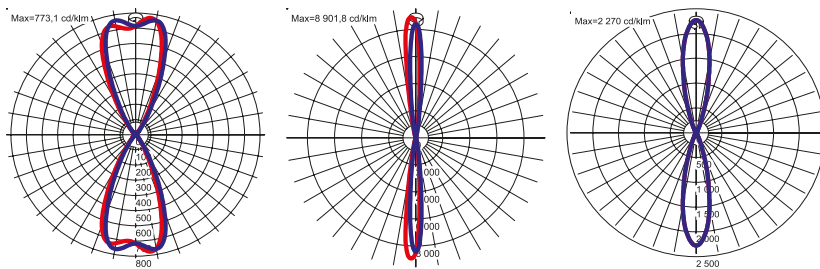
Power tolerance +/- 5%.

Lighting beam, light intensity distribution and light efficiency were examined in accordance with the EN ISO 17025:2005 norm for EN13032 norm series and the LM-79 norm.

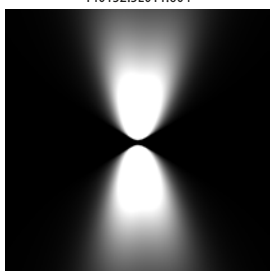
Up-to-date product info and General Warranty Terms available on our website [www.luglightfactory.com](http://www.luglightfactory.com)

Detailed information on luminous fluxes and powers for individual indexes are indicated on the product data sheet.

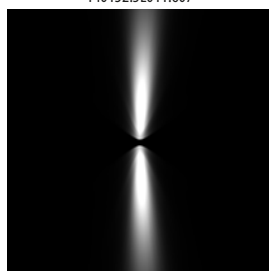
The parameters in the data sheet are given for Ta=25°C.

**WAY OF LIGHTING**

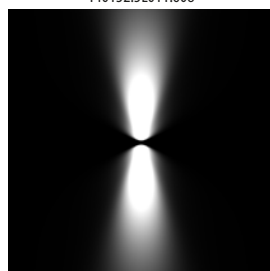
140132.5L011.604



140132.5L011.607



140132.5L011.608



Luminous flux tolerance +/- 10%.

Power tolerance +/- 5%.

Lighting beam, light intensity distribution and light efficiency were examined in accordance with the EN ISO 17025:2005 norm for EN13032 norm series and the LM-79 norm.

Up-to-date product info and General Warranty Terms available on our website [www.luglightfactory.com](http://www.luglightfactory.com)

Detailed information on luminous fluxes and powers for individual indexes are indicated on the product data sheet.

The parameters in the data sheet are given for  $T_a=25^{\circ}\text{C}$ .