



220-240V  
50/60 Hz



IP  
20



Suspended decorative luminaire for LED light sources.

#### TECHNICAL DATA

**Mounting:** suspended, on wire suspension (included)

**Body:** plastic polyester reinforced with fiberglass

**Colour:** white, black

**Diffuser:** opal plexiglass (PLX), microprismatic diffuser (MPRM)

#### ELECTRICAL DATA

**Power:** 220-240V 50/60Hz

**Includes light source:** yes

**Type of equipment:** ED

#### OPTICAL DATA

**Way of lighting:** direct

#### GENERAL DATA

**Lifetime (L70B50):** 50 000 h

**Available on request:** opal diffuser, DALI, DIM 1..10V

**Warranty:** 5 years

**Application:** offices, conference rooms, reception desks, shopping centers, car showrooms, boutiques



Code	Luminaire power [W]	Lumen luminaire [lm]	Efficacy [lm/W]	Colour temperature [K]	CRI/Ra
<b>Diffuser: opal plexiglass (PLX)</b>					
20005X.5L01.1X1	39	4150	106	4000	≥80
20005X.5L02.1X1	39	3950	101	3000	≥80
<b>Diffuser: microprismatic diffuser (MPRM)</b>					
20005X.5L01.1X2	39	4050	104	4000	≥80
20005X.5L02.1X2	39	3900	100	3000	≥80

20005  .5L01.1  2

Colour of decorative elements

- 1  pink
- 2  red
- 3  green
- 4  blue
- 5  yellow
- 6  white
- 7  black

Body colour

- 1  white
- 3  black

Designed by LUG Design Team

Luminous flux tolerance +/- 10%.  
Power tolerance +/- 5%.

Lighting beam, light intensity distribution and light efficiency were examined in accordance with the EN ISO 17025:2005 norm for EN13032 norm series and the LM-79 norm.

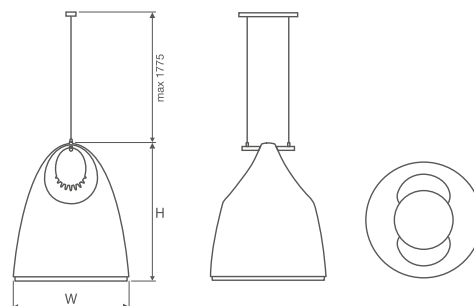
Up-to-date product info available on our website [www.flashdq.com](http://www.flashdq.com)

Detailed information on luminous fluxes and powers for individual indexes are indicated on the product data sheet.

Date of issue: 27-3-2019

The LUG Company reserves right to introduce any construction changes and improvements into the lighting luminaires

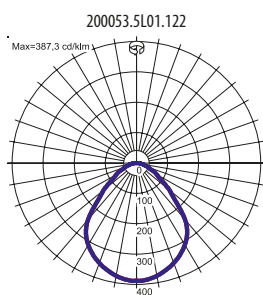
Code	Dimensions [mm] L H	Mounting dimensions [mm] L	Pallet quantity	Quantity in package	Net weight [kg]
<b>Diffuser: opal plexiglass (PLX)</b>					
20005X.5L01.1X1	443 540	220	4	1	5.5
20005X.5L02.1X1	443 540	220	4	1	5.5
<b>Diffuser: microprismatic diffuser (MPRM)</b>					
20005X.5L01.1X2	443 540	220	4	1	5.5
20005X.5L02.1X2	443 540	220	4	1	5.5



## OTHER PICTURES



## LIGHT BEAM CURVES



Designed by LUG Design Team

Luminous flux tolerance +/- 10%.  
Power tolerance +/- 5%.

Lighting beam, light intensity distribution and light efficiency were examined in accordance with the EN ISO 17025:2005 norm for EN13032 norm series and the LM-79 norm.

Up-to-date product info available on our website [www.flashdq.com](http://www.flashdq.com)

Detailed information on luminous fluxes and powers for individual indexes are indicated on the product data sheet.

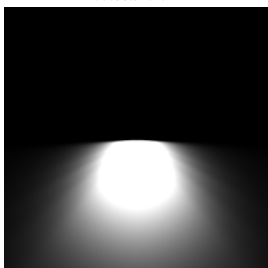
Date of issue: 27-3-2019

The LUG Company reserves right to introduce any construction changes and improvements into the lighting luminaires

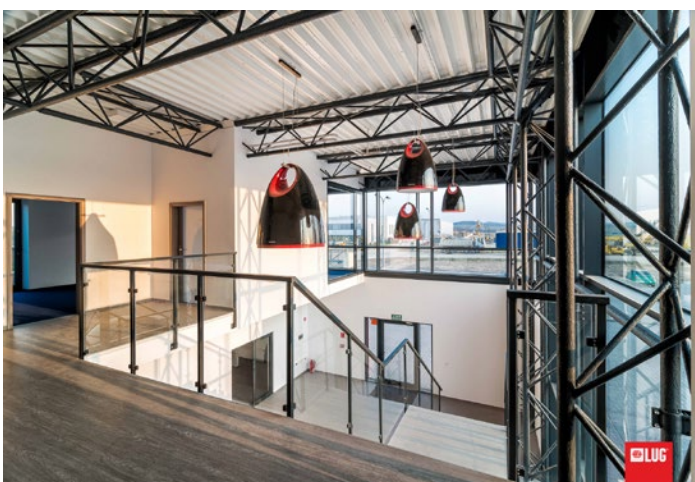
**WAY OF LIGHTING**

---

200053.5L01.122

**OTHER PROJECTS**

---



Sieper, Złotoryja, Poland

Designed by LUG Design Team

Luminous flux tolerance +/- 10%.  
Power tolerance +/- 5%.

Lighting beam, light intensity distribution and light efficiency were examined in accordance with the EN ISO 17025:2005 norm for EN13032 norm series and the LM-79 norm.

Up-to-date product info available on our website [www.flashdq.com](http://www.flashdq.com)

Detailed information on luminous fluxes and powers for individual indexes are indicated on the product data sheet.

Date of issue: 27-3-2019

The LUG Company reserves right to introduce any construction changes and improvements into the lighting luminaires